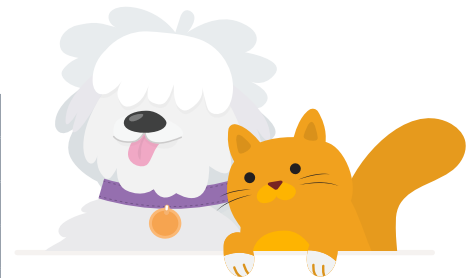


Paying for PETS

- IT'S A -
**MONEY
THING®**

YOUR GUESS ACTUAL COST DIFFERENCE

| INITIAL EXPENSES | | | |
|---|--|--|--|
| Adoption fee | | | |
| Initial medical exam | | | |
| Spaying or neutering | | | |
| Initial vaccinations | | | |
| Microchipping and/or ID tags | | | |
| Pet bed | | | |
| Carrying crate | | | |
| Food and water dishes | | | |
| Collar and leash | | | |
| Litter box | | | |
| Scratching post | | | |
| Brush and comb | | | |
| Training | | | |
| Pet deposit | | | |
| ANNUAL EXPENSES | | | |
| Pet license | | | |
| Food | | | |
| Litter | | | |
| Yearly veterinary visit | | | |
| Pet insurance | | | |
| Preventive medication (for fleas/ticks and heartworm) | | | |
| Toys | | | |
| Treats | | | |
| Grooming | | | |
| Pet sitting or pet boarding | | | |
| ADDITIONAL EXPENSES | | | |
| Safety gates and/or fencing | | | |
| Pet furniture | | | |
| Dental cleaning | | | |
| Ear cleaning | | | |
| Nail trimming | | | |
| Property damage (replacement) | | | |
| Specialty cleaning products | | | |
| Pet emergency fund | | | |



CAN YOU AFFORD A PET?

Price out the first year of owning a cat or dog by filling out the chart to left.

First, take a guess at how much each item will cost you **per year**. Then research the actual prices online. Finally, calculate the difference between your guess and the actual cost.

- Did you mostly overestimate or mostly underestimate your pet's expenses?
- Which cost surprised you the most? Why?
- According to your chart, what is the total cost of taking care of your pet for the first year?
- What are some ways you could reduce the cost of owning a pet?

Note: Skip any chart items that don't apply to your pet.

BROUGHT TO YOU BY



GLACIER HILLS
your community credit union

Glacierhills.com